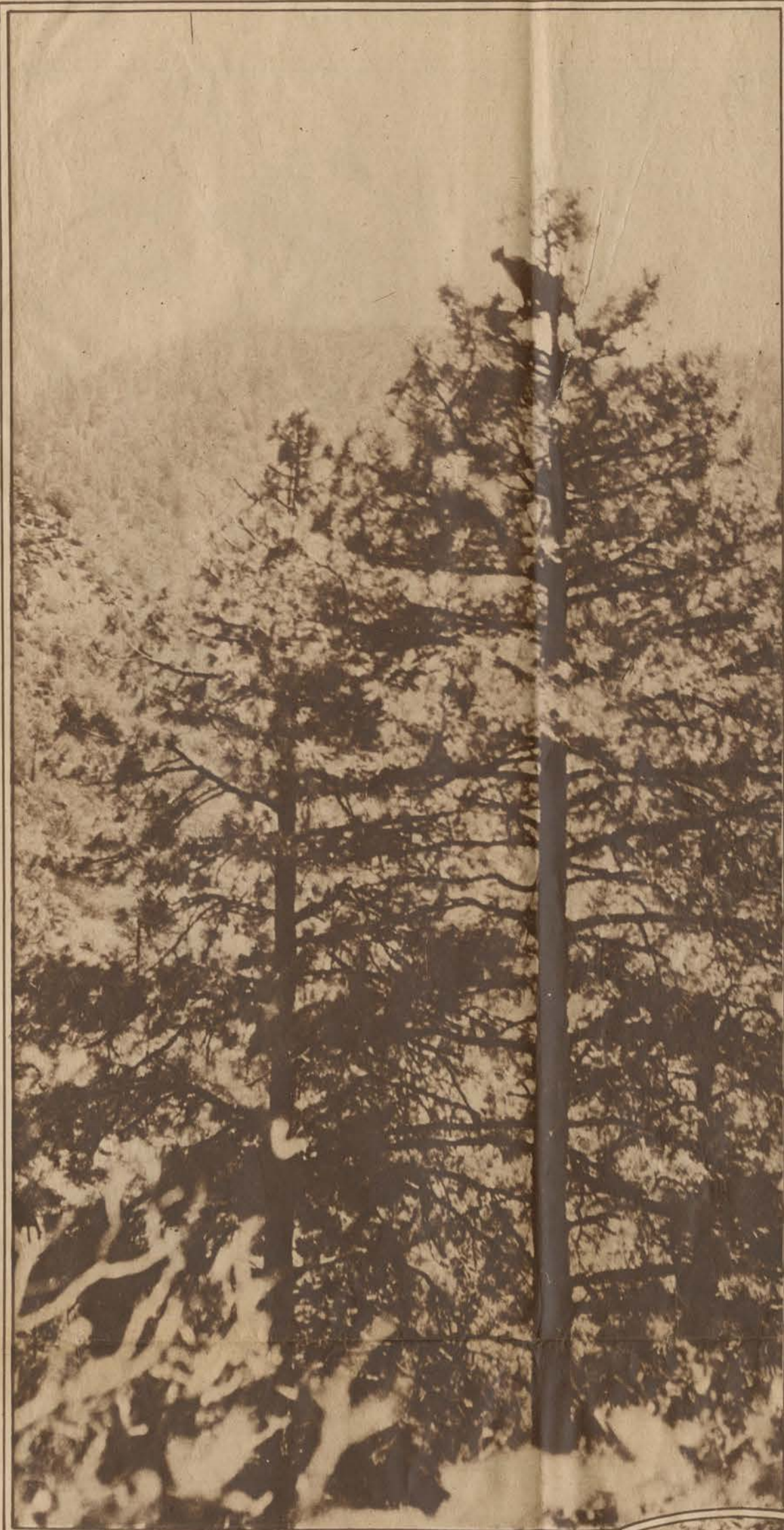


*Big Game in the Southwestern
Mountains: the American Mountain
Lion and Antelope Photographed in
Their Native Haunts*
(Photographs by William L. Finley and Arthur N. Pack.)



A NATIVE SON OF ARIZONA SURVEYS THE WORLD FROM THE TOP OF A TREE: A COUGAR, the American Mountain Lion, which once was common throughout the United States and now has been practically exterminated, photographed by Arthur Newton Pack, President of the American Nature Association, and his party in the White Mountains in the Eastern Part of the State.



A PRESENT FROM THE NATIONAL PARK SERVICE: A YOUNG BUCK PRONGHORN ANTELOPE Licks a Block of Salt Left by the Rangers in the Grand Canyon.



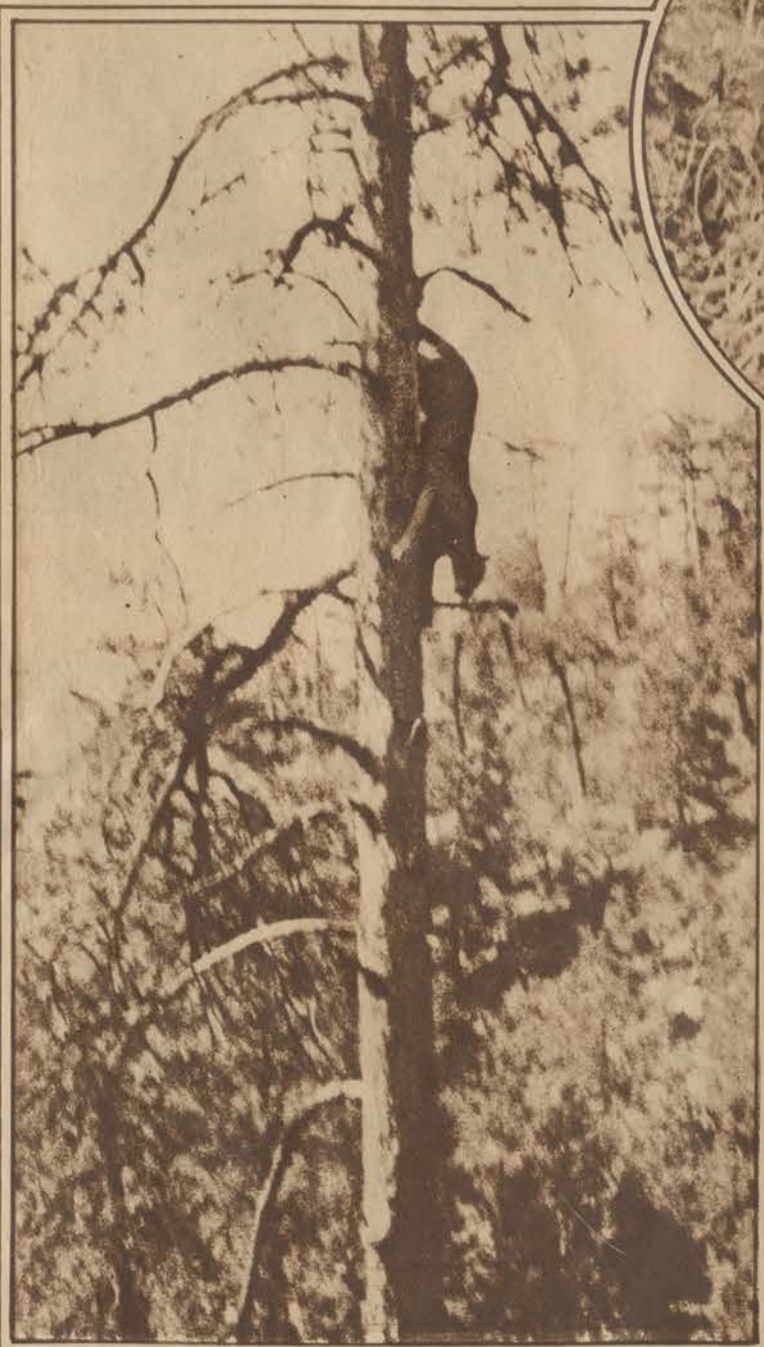
THE VANISHING AMERICAN LION IN HIS NATIVE COUNTRY: A PHOTOGRAPH OF THE COUGAR Taken at the Same Level by William L. Finley, who Climbed a Neighboring Tree to Get a Good Picture of the Beast.



THE COUGAR MAKES FACES AT THE CAMERA: THE ANIMAL, After Having Spent the Night at the Top of the Tree While the Hunters and Dogs Waited Below, as It Appeared to the Camera in the Light of Day.



PHOTOGRAPHING A SURPRISED "SITTER": THE COUGAR



JUST BEFORE THE COUGAR LEAPED STRAIGHT OVER THE HEADS OF THE BLOODHOUNDS: THE ANIMAL Coming Down Its Tree Slowly, Head First, to the Level From Which It Jumped 40 Feet to Safety and Escaped.



Finds Its Life Getting More Complicated by the Arrival of the Photographer in a Neighboring Tree, While the Bloodhounds Wait on the Ground.



THE YOUNGEST MEMBERS OF THE FAMILY: TWO 6-MONTH-OLD COUGAR KITTENS Photographed at Play.

A GOOD HOUSEHOLD PET TILL IT GROWS UP: MRS. PACK Makes Friends With One of the Two Six Months Old Kittens.

THE DEVIL AND THE DEEP SEA AT THE BOTTOM OF THE TREE: BLOODHOUNDS Waiting for the Cougar, which Had Taken Refuge in the Top Branches, Far Out of Reach of the Dogs.



THE PHOTOGRAPHER STARTS ON A LION HUNT: WILLIAM L. FINLEY, Whose Pictures of Wild Animals Are Well Known, Mounted on a Steed at the Base Camp in the Arizona Mountains.



A SPECIES ALMOST EXTINCT WHICH HAS BEEN REINTRODUCED BY THE NATIONAL PARK SERVICE: A GROUP OF ANTELOPE, Which Formerly Roamed Over the Southwestern States, Running From the Camera at Indian Gardens on the Bright Angel Trail.