

TOWN OF JOSEPH

UNION CO. OREGON.

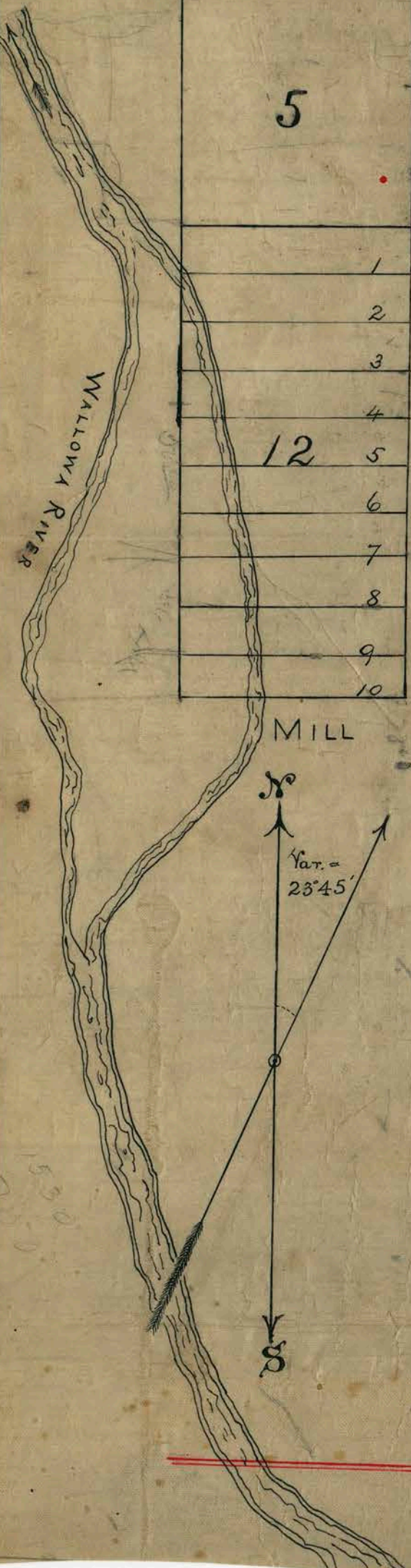
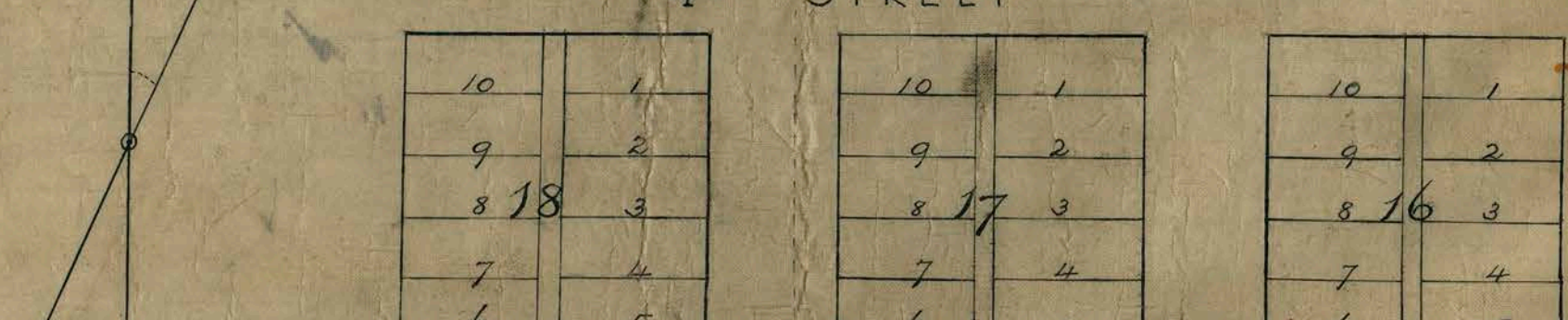
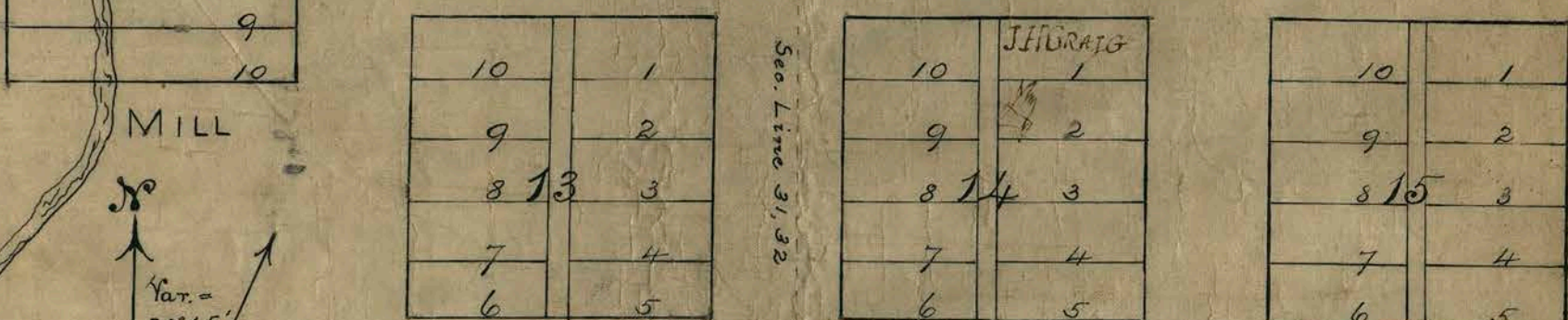
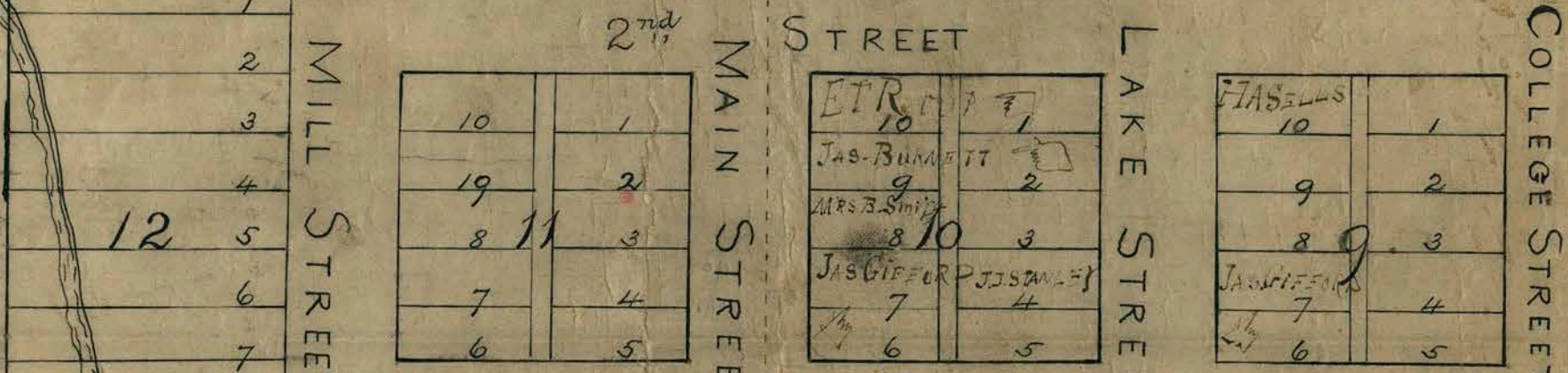
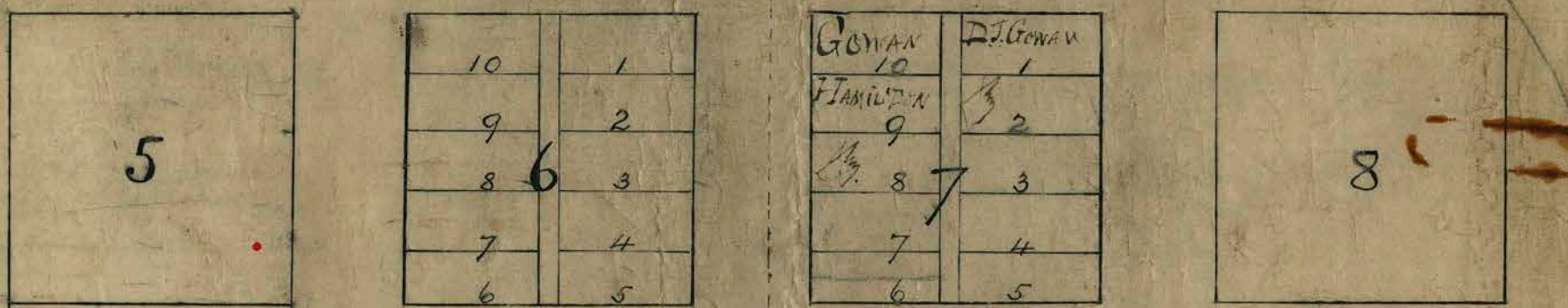
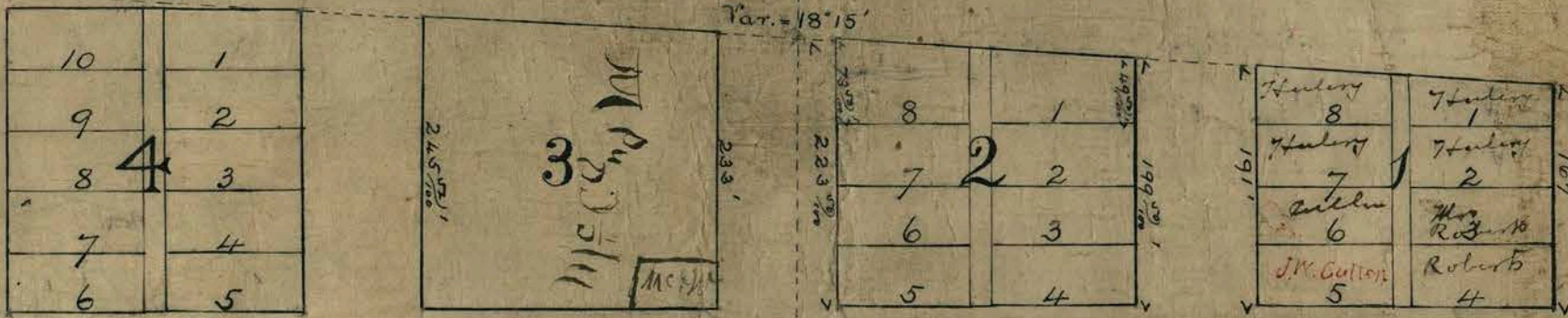
LOCATED IN SECTIONS 31 & 32,

TOWNSHIP No. 2 SOUTH.

Range 45 EAST W.M.

Dedicated Oct. 29th 1883.
Witnessed by F. D. McCully,
C. H. Funn, J. D. McCully,
A. W. Gowan.

Sec. Line 30, 31 Var. = 18' 15" Sec. 29



Sample 1 to well
N.E. Corner of P.M.
82 4 8 Sec. 31, 32 R 45
where Force sampled

Surveyed by G. J. Vail, Deputy
Recorded in Book B page 35

SCALE, 150' = 1"